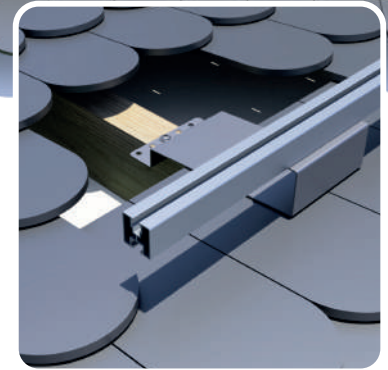
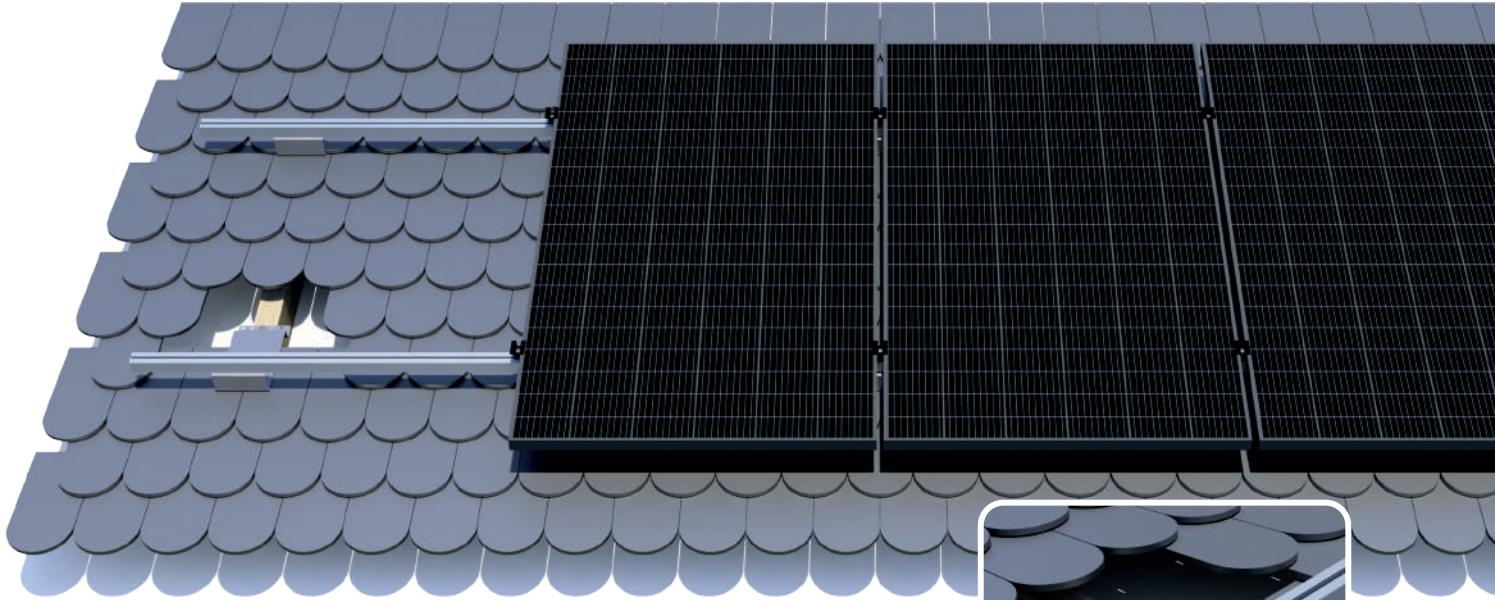


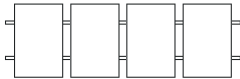
# KDS-K

## SCHLICHTE FLIESEN / PLAIN TILE

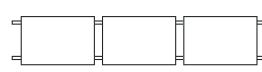


### Modulanordnung / Modules layout

Vertikal  
Vertical



Horizontal  
Horizontal



**Installation/ Installation**  
Für den Dach Bau  
For roof construction



**Für jedes Modul**  
For any PV module  
Ja / Yes



**Griffe Regulierung**  
Handle adjustment  
Nein / No



**Garantie**  
Guarantee  
10 Jahre / 10 years

### Material / Material

Aluminium / Aluminium  
Edelstahl / Stainless Steel

### Systems Neigungswinkel Angle of the system

Abhängig von der Dachneigung  
Depending on the roof slope

### Platz zwischen den Griffen Spacing between handles

60 - 100 cm

### Erfüllte Standards / Standards

PB-TUV-78:2012, PN-EN 1991-1-3:2005  
PN-EN 1991-1-4:2008

### Optionen / Option

Schwarze Schienen/ Black rails    Schwarze Anschlüsse / Black connectors  
Schwarze Klemmen / Black clamps    Schienenendkappen / End caps

